

RTA Series

polkaudio
The Speaker Specialist®

5601 Metro Drive
Baltimore, MD 21215 USA
(301) 358-3600



RTA 15TL



RTA 11TL



RTA 8TL

Driver Complement

One 1 inch (25 mm) Polk SL3000 dome tweeter
Four 6½ inch (165 mm) Polk trilaminate polymer
bass-midrange drivers (6503)
Two 10 inch (254 mm) sub-bass radiators,
one high-resonance, one low-resonance

Size (Inches)

43 H (109.2 cm) × 12½ W (31.7 cm) × 15½ D
(39.4 cm)

Overall Frequency Response

20 Hz-26 kHz

– 3dB limits

35 Hz-25 kHz

Recommended Amplification

30-250 watts/channel

Impedance

Compatible with 8 ohm outputs

Efficiency

90 dB

Shipping Weight

77 lbs. (34.9 kg.)

Driver Complement

One 1 inch (25 mm) Polk SL3000 dome tweeter
Two 6½ inch (165 mm) Polk trilaminate polymer
bass-midrange drivers (6510)
Two 8 inch (203 mm) sub-bass radiators,
one high-resonance, one low-resonance

Size (Inches)

38 H (96.5 cm) × 10½ W (26.7 cm) × 14½ D
(36.8 cm)

Overall Frequency Response

22 Hz-26 kHz

– 3dB limits

36 Hz-25 kHz

Recommended Amplification

30-250 watts/channel

Impedance

Compatible with 8 ohm outputs

Efficiency

90 dB

Shipping Weight

58 lbs. (26.3 kg.)

Driver Complement

One 1 inch (25 mm) Polk SL2500 dome tweeter
Two 6½ inch (165 mm) Polk trilaminate polymer
bass-midrange drivers (6516)

Size (Inches)

32½ H (82.5 cm) × 9 W (22.9 cm) × 11½ D
(29.2 cm)

Overall Frequency Response

30 Hz-25 kHz

– 3dB limits

42 Hz-23 kHz

Recommended Amplification

20-250 watts/channel

Impedance

Compatible with 8 ohm outputs

Efficiency

89 dB

Shipping Weight

39 lbs. (17.7 kg.)



Sound that astonishes the ear...

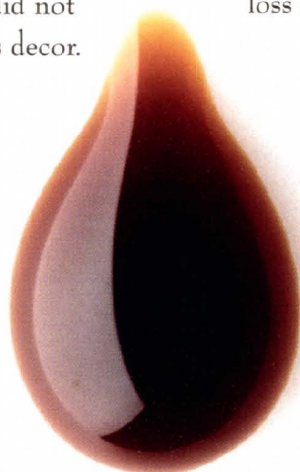


Today's Generation Of Music Lovers

Years ago, it didn't matter what speakers looked like as long as they sounded good. Admittedly, some of the best sounding speakers did not always blend perfectly into everyone's decor.

Today, those of us who consider music an important part of our life and who demand the highest performance possible from our stereo components prefer that our loudspeakers reflect our lifestyle by complementing our taste in home furnishings.

The new RTA 15TL, representing over 18 years of Polk's research and development, is already setting new standards of sonic excellence. And its elegant cabinet is a beautiful visual addition to any environment or listening room.



By using a rare ULV Magnetic Fluid to cool a tweeter's voice coil, both performance and reliability are vastly increased.

Low Viscosity Magnetic Fluid, nearly as thin as water, to cool the SL 3000's voice coil, power handling capacity and reliability would vastly increase. Indeed, the SL 3000 tweeter can significantly exceed normal listening levels without loss of performance or reliability.

The Clear Imaging of Polk's Line Source Array

By arranging its four 6 1/2" drivers in a vertical line source along with the SL 3000 tweeter, superior imaging and midrange purity is achieved. This line source technology is the same advanced principal used in Polk's flagship "Signature Reference Series."

By clearly focusing midrange frequencies and avoiding floor and ceiling reflections, Polk's Line Source delivers a wide open, natural sound without tonal coloration. Consequently, the RTA 15TL performs superbly in a wide variety of room sizes and placements.

...from speakers that seduce the

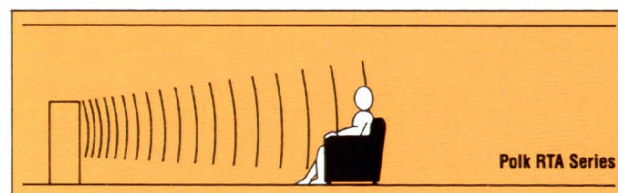
eye.

It All Begins With The Remarkable SL 3000 Trilaminare Tweeter

Working with the Johns Hopkins University Center for Non-Destructive Testing, Polk engineers utilized Laser Interferometry to test tweeter designs and materials. They found that ultimately, by vapor-depositing stainless steel and aluminum to a polyamide dome surface, an

extended, very flat frequency response, out to 26 kHz, was achieved.

Polk also discovered that by using a rare Ultra



Polk's Line Source Technology reduces floor and ceiling reflections by focusing the vertical dispersion of midrange frequencies.

Controlling Diffraction To Create A Lifelike Stage

The grille of the RTA 15TL has been specially designed to eliminate mid and high frequency diffraction and to actually enhance dispersion. In fact, the RTA 15TL sounds better with the grille on than off.

And to eliminate any possibility of phase anomalies and other colorations, Polk developed a unique "diffraction spoiler" which dramatically improves audible frequency response and imaging.

By controlling diffraction, "smearing" of the sonic image and "peaky" characteristics are eliminated.

Polk Bass: Deep, Powerful & Tight

Two independently tuned, 10 inch bass radiators, one facing front, one facing rear, deliver the impressive bass for which Polk is known. These two radiators move a significant amount of air and at the same time produce a more accurate reproduction of an instrument's timbre and transience than a single conventional woofer. This configuration provides the tight, well defined bass normally associated with small systems combined with the deep, powerful performance found in large systems.

Listen To The Next Generation Of Loudspeakers

The new RTA 15TL is both a sonic and aesthetic breakthrough. It is also priced to create a new standard in value. Ask for a demonstration at your authorized Polk dealer. You'll hear the detail, depth and excitement of a live performance.

You'll hear...and see... the next generation of loudspeakers.



polk audio
The Speaker Specialist®



The RTA 15TL is available in natural oak, natural walnut and black oak wood veneer finishes.